

## DESCRIPTION

2-Way Solenoid Valve – General Purpose  
Normally Closed – Direct Action  
1/8" NPT Connection

## APPLICATION

Water – Air – Gas – Liquids – Low Viscosity Oils

- Instrumentation
- Water Treatment
- Welding Equipment
- Dental Equipment (autoclaves)
- Laundry and Dry Cleaning Machine

## FEATURES

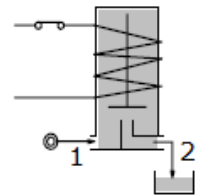
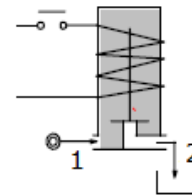
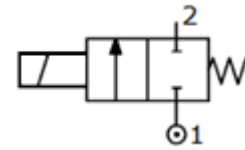
Maximum Allowable Pressure 250 PSI  
Direct action with piston in Nitrile seal  
Maximum Fluid Viscosity 25 cSt (mm<sup>2</sup>/s)  
Ambient Temperature: with class F coil 14°F +131°F  
with class H coil 14°F +176°F

## NOTES

Any Mounting Position

## OPTIONALS

Nickel Surface Treatment Chemical  
Explosion-proof coil



CODE	Connection NPT	Hole mm	KV m³/h	Differential Pressure PSI			Nominal Power			Coil		Sealing	Temp. Field F°
				Min	Max		AC	VA	DC	Type	Width		
					AC	DC	Start- up	Regime	Watts				
Z221-A1M	1/8"	1.5	0.06	0	240	240	12	8	6.5	3	22	NBR=O	14 +194
Z221-A2M		2.5	0.14	0	150	82	12	8	6.5	3	22	EPDM=J FPM=K	14 +284 14 +266

Seat material	*Nitrile = O	EPDM = J	FPM = K
Temperature Field	14 to 194°F	14 to 284°F	14 to 284°F
Applications	Water, air, light oils. Neutral gases. Kerosene. Low and medium vacuum.	Water vapor, hot water, acetone	Gasoline, naphtha, aromatics, benzene, etc. Hot gases. High vacuum. Diesel oil.

\*Nitrile floating diaphragm.  
Please contact your sales team for other seat materials.

COIL	Direct Current Voltage		Alternating Current 60/80Hz Voltage		Electrical Connector	Connector
	12	24	110	220		
Type 30 Width 22	B30H-COIL	B30W-COIL	B30Z-COIL	B30Y-COIL	DIN 43650A	PG11 code 10349060

#### DESCRIPTION

Insulation Class

Series 3=F

Voltage Tolerance

AC +15% - 10%

DC +/- 10%

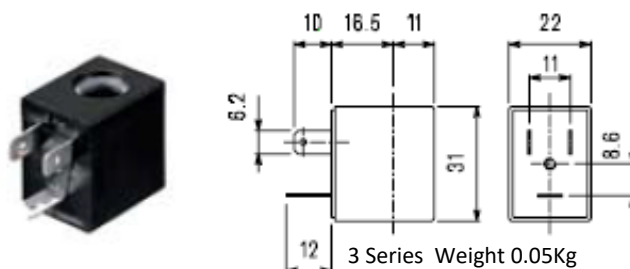
IP65 with Mounted Connector

ED100%

#### OPTIONAL

Insulation Class H

Special voltage/power

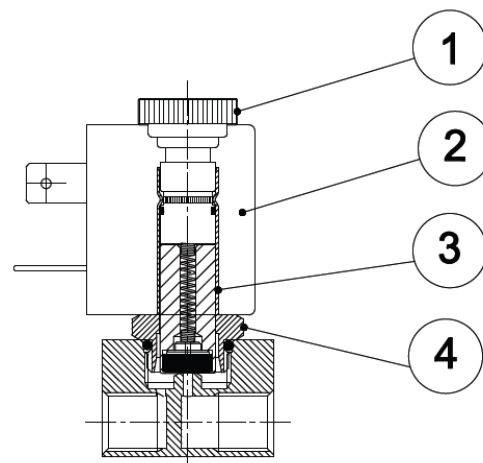


## PARTS LIST

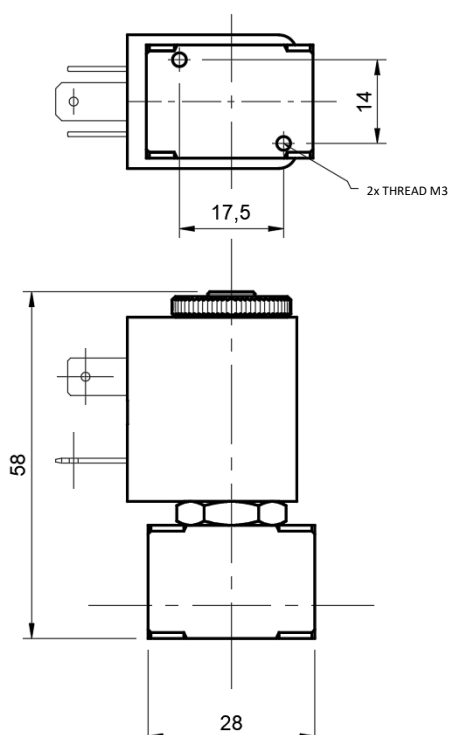
1. Coil Fixing Thread
2. Coil
3. Moving Core
4. Solenoid Assembly

## CONSTRUCTION

Body	Brass
Guide Tube	Brass
Mobile and Fixed Core	Stainless Steel
Spring	Stainless Steel
Seal	NBR – FPM – EPDM



## DIMENSIONS



Approximate weight = 0.138Kg

