

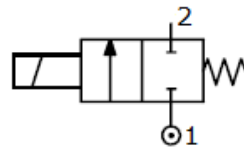
DESCRIPTION

2-Way Solenoid Valve – General Purpose
Normally Closed – Direct Acting
1/8" and 1/4" NPT threaded connections

APPLICATION

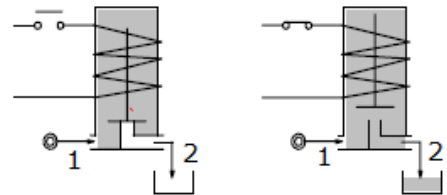
Water – Air – Gas – Liquids – Low Viscosity Oils
Instrumentation and laboratories
Pilot burners for combustible liquids or gases

- Dental equipment
- Vacuum systems
- Washing and dry cleaning machines
- Agricultural sprayer
- LPG and Natural Gas burners, ovens
- Gas fryers and industrial mixers



FEATURES

Maximum Allowable Pressure 450 PSI
Direct action with piston in Nitrile seal
Maximum Fluid Viscosity 25 cSt (mm²/s)
Ambient Temperature: with class F coil 14°F +131°F
with class H coil 14°F +176°F



NOTES

Any mounting position

OPTIONALS

Surface Treatment in Chemical Nickel

CODE	Connection NPT	Hole mm	KV m³/h	Differential Pressure PSI			Nominal Power			Coil		Sealing	Temp. Field F°
				Min	Max		AC	VA	DC	Type	Width		
					AC	DC	Start- up	Regime	Watts				
RR222-..1M	1/8" = A 1/4" = B	1.5	0.07	0	435	375	40	30	27	5	36	NBR=O EPDM=J FPM=K PTFE=H	14 +194 <+284 14 +284 14 +356
RR222-..2M		2.5	0.15	0	230	200	40	30	27	5	36		
RR222-..3M		3.5	0.32	0	145	115	40	30	27	5	36		
RR222-..4		4.5	0.41	0	95	70	40	30	27	5	36		
RR222-..6M		6.4	0.64	0	70	65	40	30	27	5	36		

Seat material	*Nitrile = O	EPDM = J	FPM = K
Temperature Field	14 to 194°F	14 to 284°F	14 to 284°F
Applications	Water, air, light oils. Neutral gases. Kerosene. Low and medium vacuum.	Water vapor, hot water, acetone	Gasoline, naphtha, aromatics, benzene, etc. Hot gases. High vacuum. Diesel oil.

*Nitrile floating diaphragm.

Please contact your sales team for other seat materials.

COIL	Direct Current Voltage		Alternating Current 60/80Hz Voltage		Electrical Connector	Connector
	12	24	110	220		
Type 52 Width 36	B52H-COIL	B52W-COIL	B52Z-COIL	B52Y-COIL	DIN 43650A	PG11 code 10349060

DESCRIPTION

Insulation Class

Series 5=F

Voltage Tolerance

AC +15% - 10%

DC +/- 10%

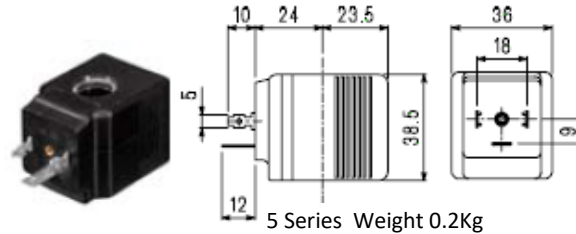
IP65 with Mounted Connector

ED100%

OPTIONAL

Insulation Class H

Special voltage/power

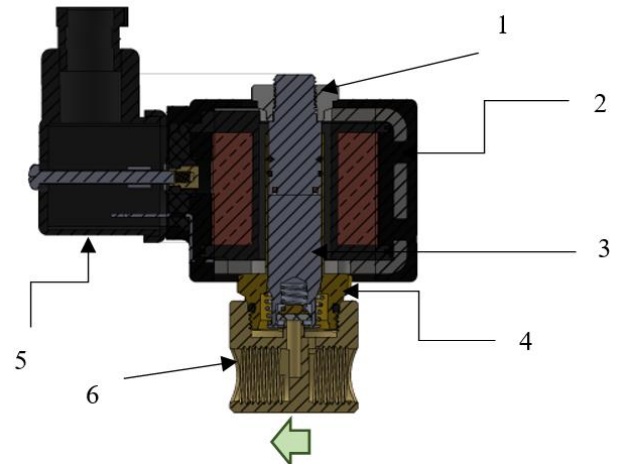


PARTS LIST

1. Coil Fixing Thread
2. Coil
3. Moving Core
4. Solenoid Assembly
5. Electrical Connector
6. Valve Body

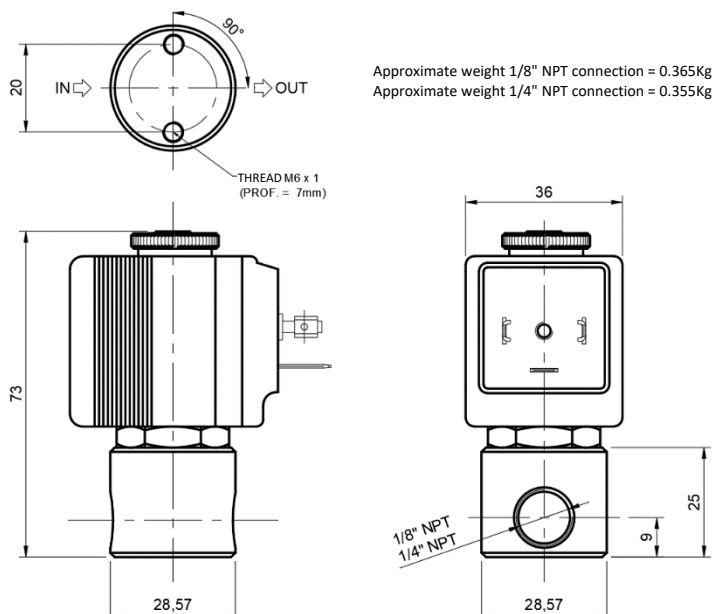
CONSTRUCTION

Body	Brass
Guide Tube	Brass
Mobile and Fixed Core	Stainless Steel
Spring	Stainless Steel
Seal	NBR – FPM – EPDM – PTFE



DIMENSIONS

For holes from 1.5mm to 4.5mm



For 6.4mm holes

